



living is here

Waterfront is a private lakefront community consisting of 20, 4 bedroom homes. Each home has a unique sun orientation, lakeview and close proximity to the water, beach and dock.

**PLAN "C"**  
**COURTYARD-CENTRE**  
**Four Bedrooms**  
**2,260 sq.ft.**  
**Units: 10 & 11**

FOR MORE INFORMATION CALL:

**1-866-582-1999**

[www.KelownaLakefront.com](http://www.KelownaLakefront.com)



**Trasolini Chetner**  
Construction + Development

[www.traschet.com](http://www.traschet.com)

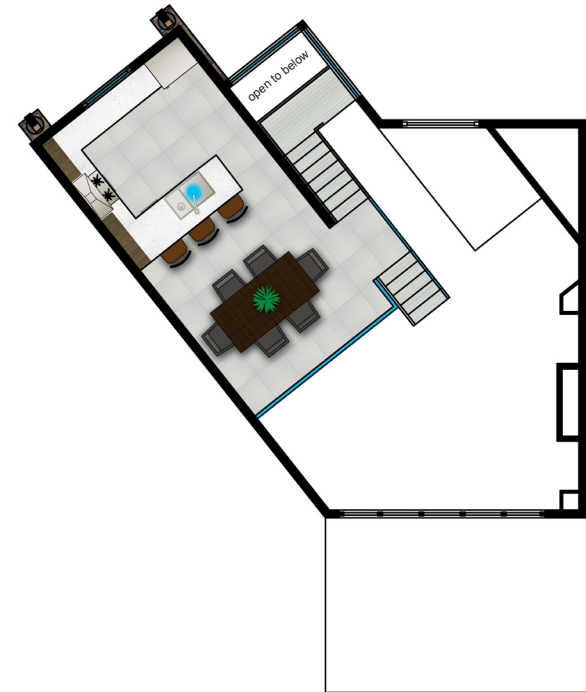


The Developer reserves the right to make changes and modifications to the information provided herein. Renderings, photos and plans are representational only, and may not be accurate. Dimensions, sizes, features, specifications, layouts and materials are approximate and are subject to change without notice. All plans, features and specifications provided herein represent fully upgraded units. E. & O.E.

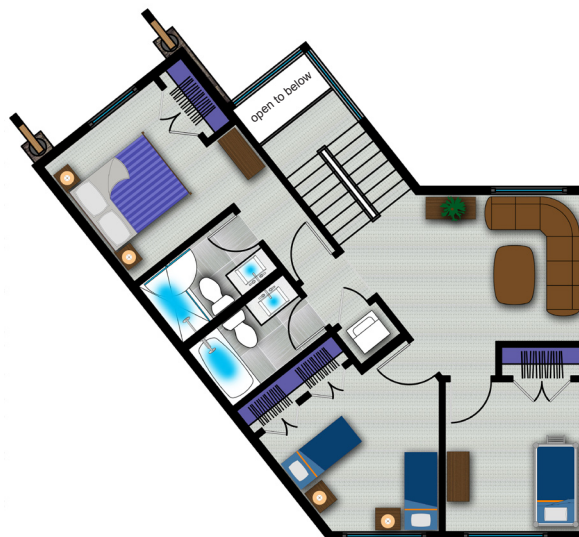
MAIN FLOOR



MEZZANINE FLOOR



MIDDLE FLOOR



UPPER FLOOR

